

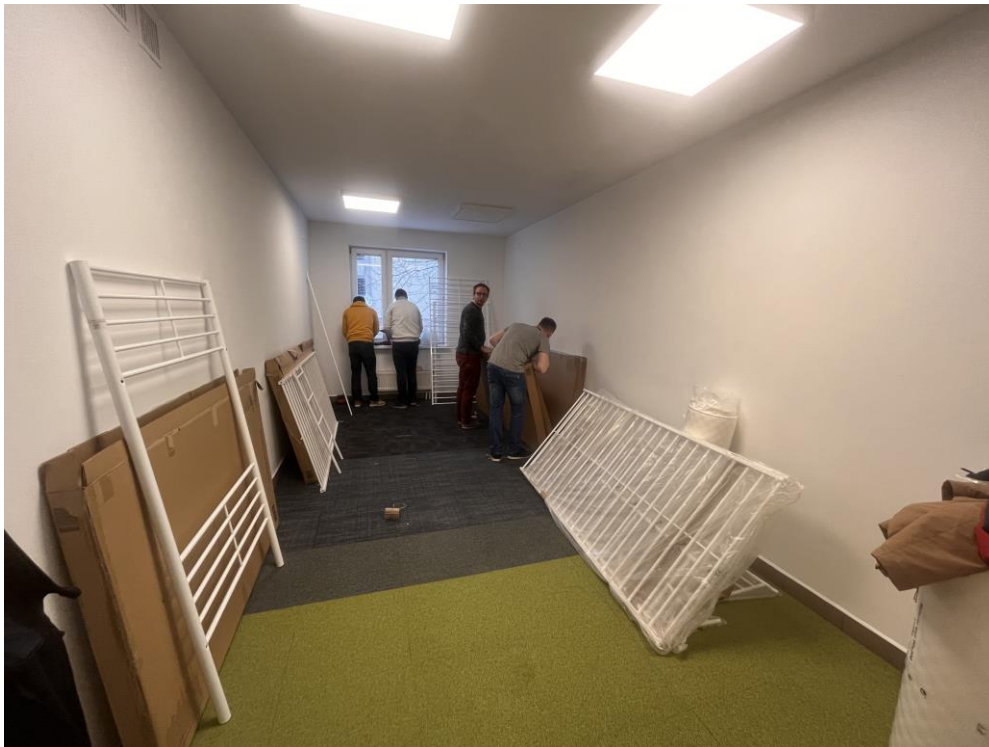
1. How did your company contribute to help the situation in Ukraine or it's citizens/refuges?

- Ghelamco has been involved in helping refugees since the first days of the war, providing more than 500 hotel beds in The Warsaw HUB office building.
- One of the first actions we took was to adapt part of the building on Bema Street for housing for refugees. We were not only involved in the refurbishment but also carried it out, coordinated and financed it. It was a comprehensive adaptation of the space to meet the needs of more than 250 people. We equipped the flats with everything necessary for life, including toys for the youngest, so that the war-affected citizens of Ukraine would feel at home there.
- Ghelamco was also involved in cooperation with the City of Warsaw. We undertook the adaptation of an abandoned city office building at 77/79 Marszałkowska St. The building became a temporary home for Ukrainian refugees. The adaptation of part of the building to accommodate 800 people was carried out at our expense and according to a design agreed with the city's architecture office.
- In addition, we organised collections among Ghelamco employees, who were actively involved. Thanks to their generosity, we were able to collect, among other things, clothing, food and backpacks for the youngest. We also purchased 800 beds for those most in need.
- We have also been actively involved in helping refugees, among other things, to find jobs, schools or start their own businesses. We support them with our experience, direct them to the right institutions and offices, help them learn the language and make the most of their skills.

GHELAMCO

INTERNATIONAL REAL ESTATE INVESTOR & DEVELOPER

NEWS RELEASE



**WE
CREATE
THE FUTURE
TODAY**

GHELAMCO

INTERNATIONAL REAL ESTATE INVESTOR & DEVELOPER

NEWS RELEASE



**WE
CREATE
THE FUTURE
TODAY**

2. For the special occasion of 30th Anniversary, your best memories of BBC, including what kind of benefits have you got while being a Member?

- We are proud to be part of this remarkable community. Despite limited resources and a relatively small number of staff, the organisation is very vibrant. The Belgian Business Chamber organises many events at a very high level, which are extremely interesting, substantive and engaging for members. The variety of meetings with such a high level of expertise allows for many valuable contacts to be made and extremely valuable experiences to be exchanged. Thanks to the BBC, we have the opportunity to provide a developer's perspective and lobby for the setting of guidelines and regulations for the industry as a whole.
- As the industry leader, we have been consistently setting the directions for the development of the Polish real estate sector for years. That is why meetings within the Belgian Business Chamber give us first and foremost the opportunity to present our own company. At last year's gala, we were able to present Skyfall Warsaw - located on the 46th floor of the Warsaw UNIT skyscraper, a fully glazed viewing terrace with a falling floor. We are not slowing down, with further ground-breaking projects in the pipeline, which we look forward to presenting to the BBC community in the near future.
- The BBC has brought together many disparate businesses into one collaborative organisation. The incredible value is very much in bringing Flanders, Brussels and Wallonia together in one business organisation. It is also a first point of contact for Poles who want to start their business in Belgium. The BBC helps to set directions, take the initiative and gives the opportunity for direct contact with, among others, government representatives, which proves to be invaluable support for many entrepreneurs.
- We have particularly special memories of King Philip I visit to Warsaw Spire. It was a great opportunity to present not only the dynamically developing Warsaw, but also other companies in front of the King himself.



INTERNATIONAL REAL ESTATE INVESTOR & DEVELOPER

3. If you were a President of the BBC for one-day, what would you implement in the organization part of the Belgian Business Chamber?

- The organisation is extremely strong and proactive. However, if we could stand at the head of the Belgian Business Chamber for a day, we would love to be able to listen to all these collected, great ideas and implement them.